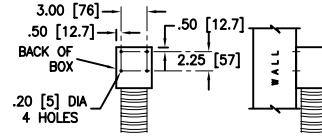
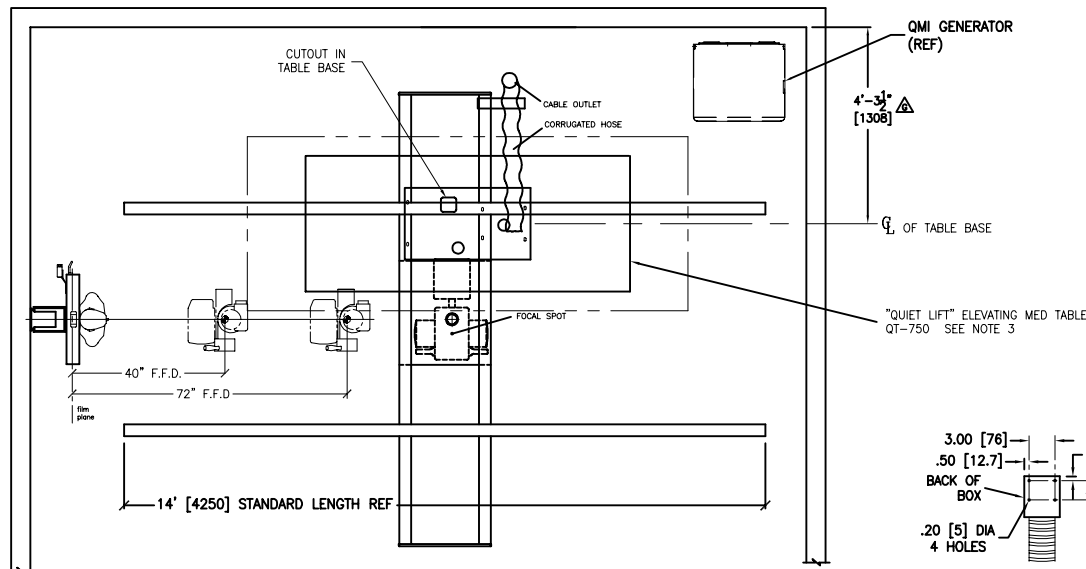
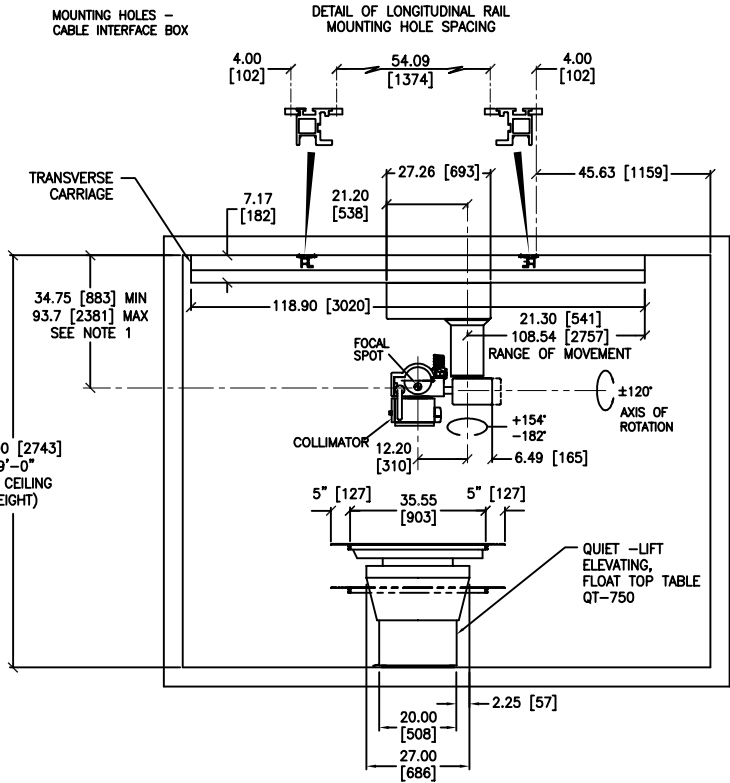
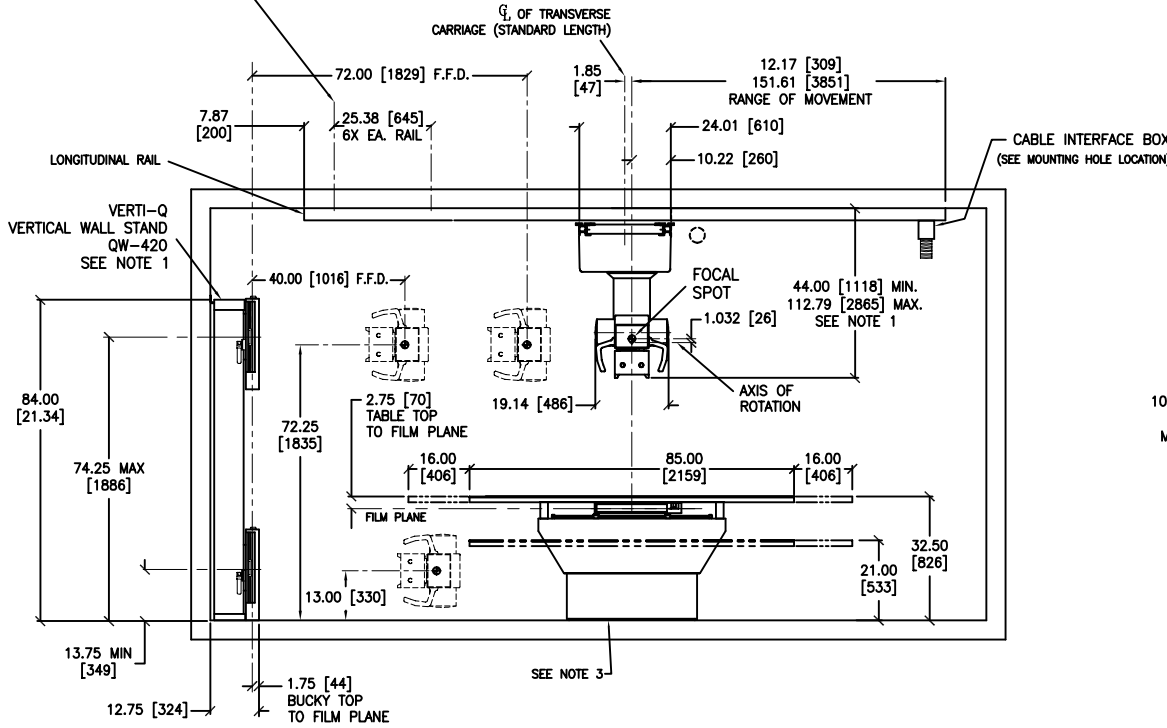


PROPRIETARY
 THIS DOCUMENT EMBODIES PROPRIETARY RIGHTS OF
 QMI LLC. IT IS FURNISHED FOR REFERENCE ONLY.
 ALL OTHER USE IS PROHIBITED.
 COPYRIGHT © 2004 QMI

REVISIONS			
REV	DESCRIPTION	DATE	DRN BY:
B	MODIFIED DIMENSIONS	1-5-01	DW
C	150 LBS PULL WAS 100 LBS PULL (NOTE 1).	7-10-01	DW
D	ADDED NOTE 6.	1-2-01	DW
E	ADDED CABLE INTERFACE BOX.	7-12-02	DW
F	ADDED WEIGHTS (NOTE 7); ADDED TOP (PLAN) VIEW.	2-16-04	DW
G	ADDED MINIMUM TABLE-TO-WALL DIMENSION.	2-24-04	DW



LOCATION OF MOUNTING POINTS
 FOR LONGITUDINAL RAILS (7 TOTAL EA. RAIL)



NOTES:

- VERTI-Q MOUNTING POINTS MUST WITHSTAND APPROX. 150 LBS [68.04 kg] PULL.
- CEILING MUST BE CAPABLE OF SUPPORTING A 1000 LB [453.6 kg] DYNAMIC LOAD.
- QUIET-LIFT MOUNTING POINTS MUST WITHSTAND APPROX. 500 LBS [226.8 kg] PULL.
- DIMENSIONS WITHIN [] ARE IN MILLIMETERS.
- SPECIFICATIONS ARE SUBJECT TO CHANGE WITHOUT PRIOR NOTICE.
- POWER INPUT: 110-120 VAC, 4A, 50/60 HZ
 POWER OUTPUT: 24 VAC, 250W, +30 VDC, 100W (120W MOM.)
- WEIGHTS:
 CARRIAGE ASSEMBLY: 525 LBS [238 kg].
 TRANSVERSE TRACKS: 154 LBS [70 kg].
 LONGITUDINAL RAILS: 58 LBS [26.5 kg].

DRAWN BY	DATE
DON WHITE	1-5-01
CHECKED BY	
ENG APPROVAL	
QA APPROVAL	
MFG APPROVAL	

Quantum Medical Imaging, LLC		
TITLE Q-RAD CS-1 SYSTEM		
MODEL NOS. QS-580; QT-750; QW-420	DWG/PART NO DC80-006	REV G
SCALE NOT TO SCALE DWG CAT DOCUMENTATION		SHEET 1 OF 1